



Office Space For Lease

Smyth Medical Centre
1929 Russell Road
Ottawa, Ontario

Please Contact:

IAN SHABINSKY

Principal

613-748-3700

ishabinsky@glenview.ca

Available Space:

Suite 310 - 1,033 sq.ft.

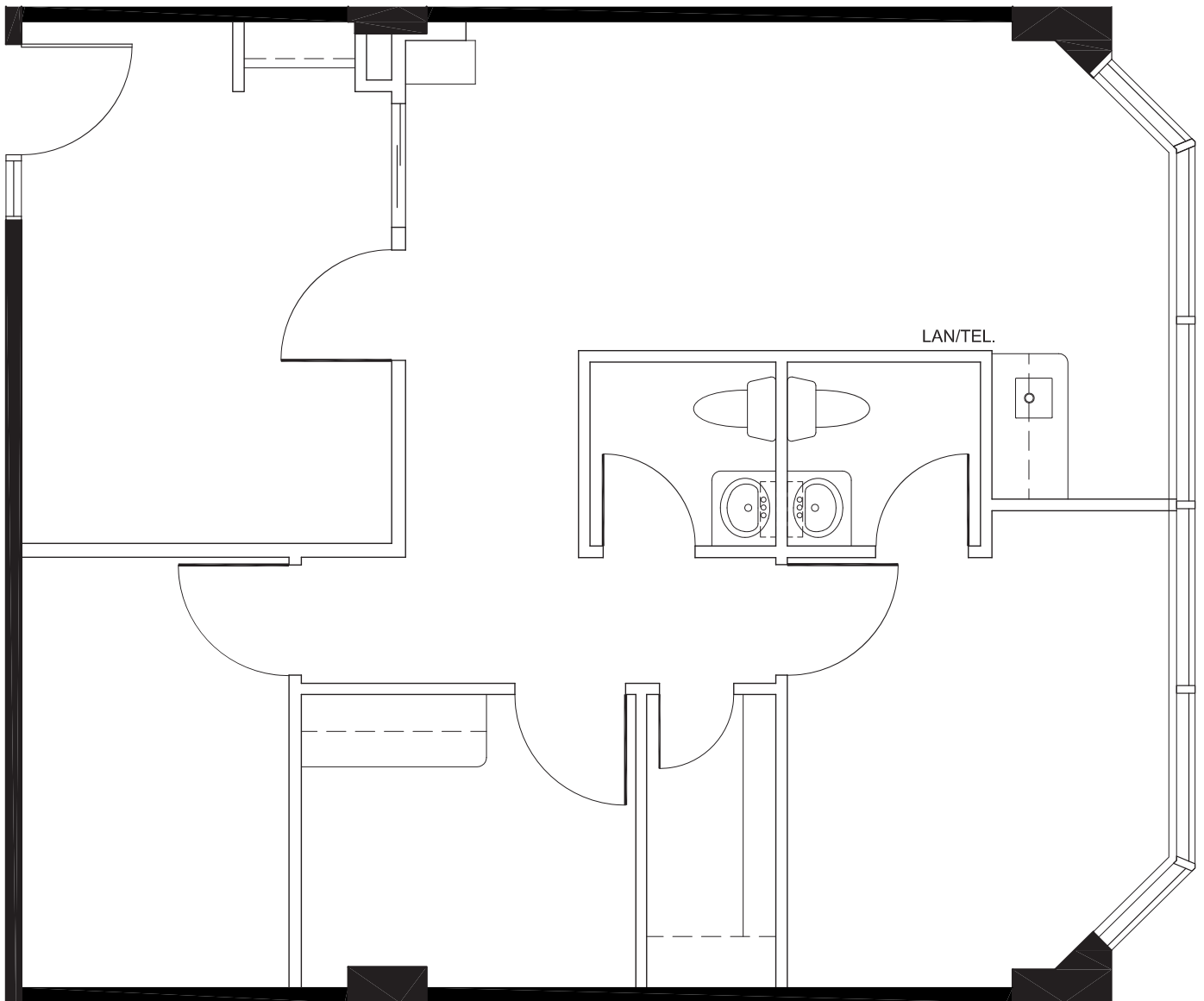
Available:

Immediately

Highlights:

- Three examination rooms
- Two private washrooms
- Large administration and reception area
- On-site medical laboratory, radiology services, and pharmacy

1929 Russell Road SUITE 310 FLOOR PLAN



Suite 310 - 1,033 sq.ft.