



Office Space For Lease

Smyth Medical Centre
1929 Russell Road
Ottawa, Ontario

Please Contact:

IAN SHABINSKY

Principal

613-748-3700

ishabinsky@glenview.ca

Available Space:

Suite 300 – 679 sq.ft.

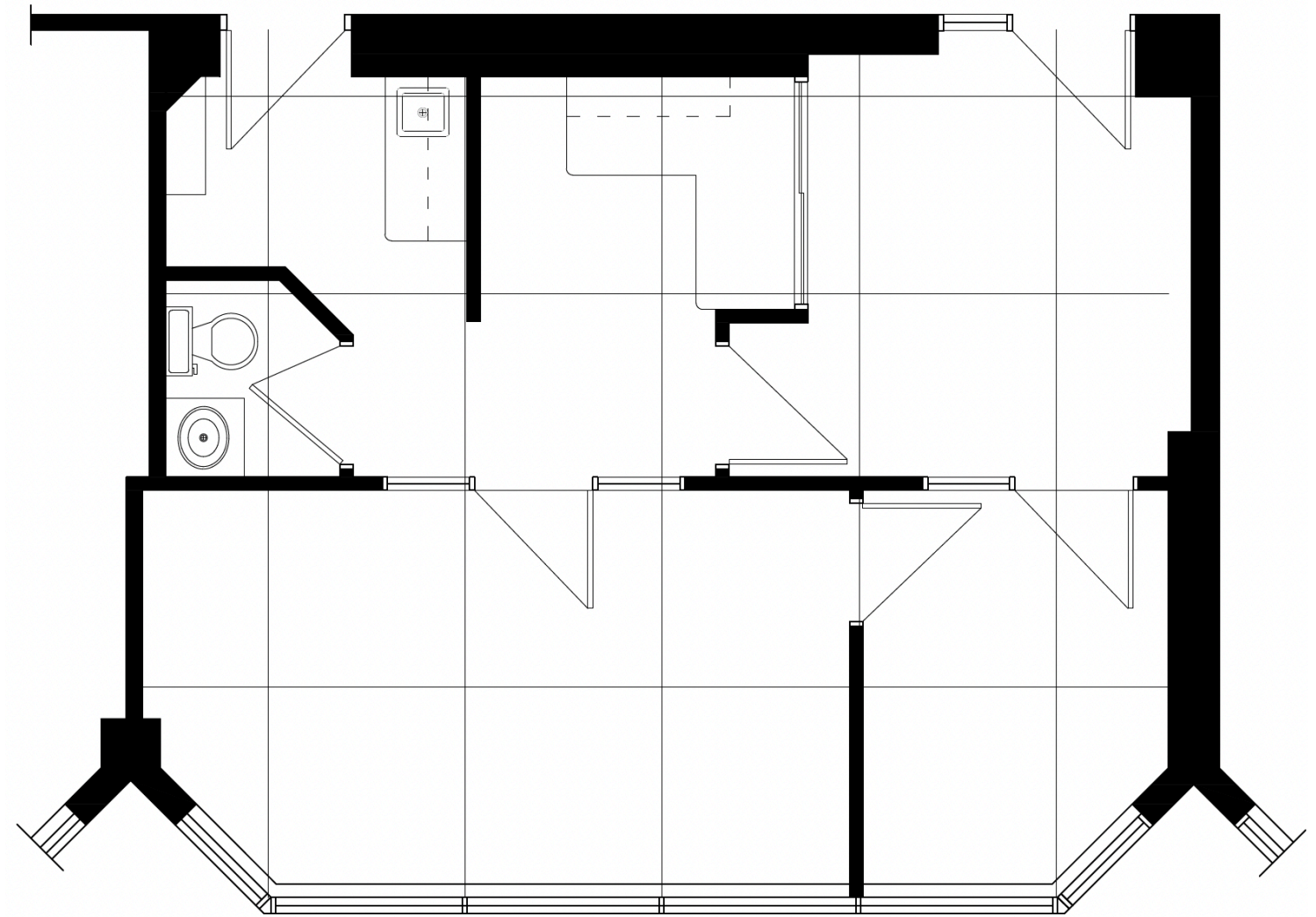
Available:

Immediately

Highlights:

- Two offices, reception area, large workspace and kitchenette
- Private washroom
- On-site medical laboratory, radiology services, and pharmacy

1929 Russell Road SUITE 300 FLOOR PLAN



Suite 300 – 679 sq.ft.