



## Office Space For Lease

**Smyth Medical Centre**  
1929 Russell Road  
Ottawa, Ontario

Please Contact:

**IAN SHABINSKY**

Principal

613-748-3700

[ishabinsky@glenview.ca](mailto:ishabinsky@glenview.ca)

### Available Space:

Suite 218 - 1,036 sq.ft.

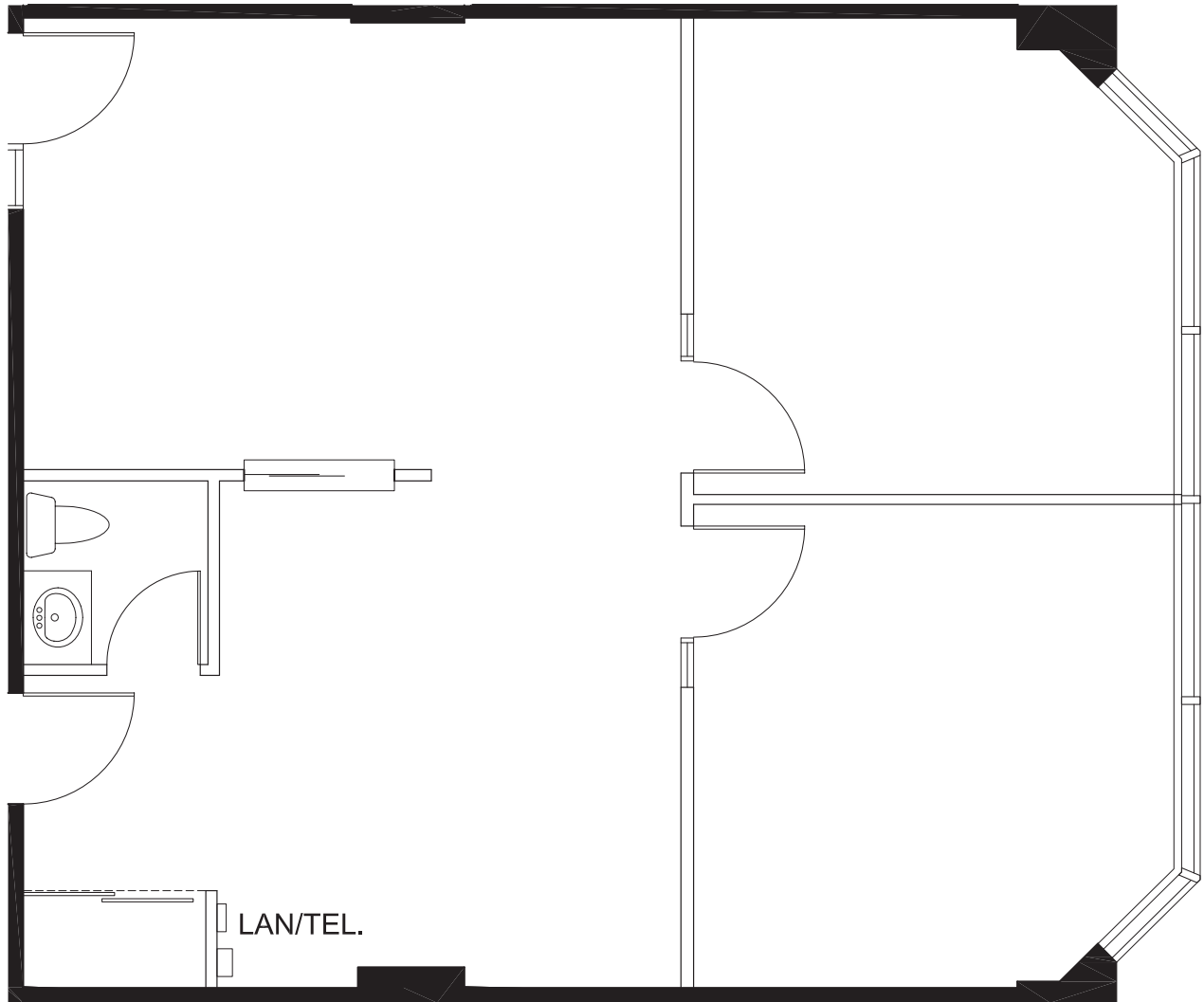
### Available:

Immediately

### Highlights:

- Reception area
- Two offices along windows
- Private washroom
- On-site medical laboratory, radiology services and pharmacy

## 1929 Russell Road SUITE 218 FLOOR PLAN



Suite 218 - 1,036 sq.ft.