



Office Space For Lease

Smyth Medical Centre
1929 Russell Road
Ottawa, Ontario

Please Contact:

IAN SHABINSKY

Principal

613-748-3700

ishabinsky@glenview.ca

Available Space:

Suite 214 - 1,041 sq.ft.

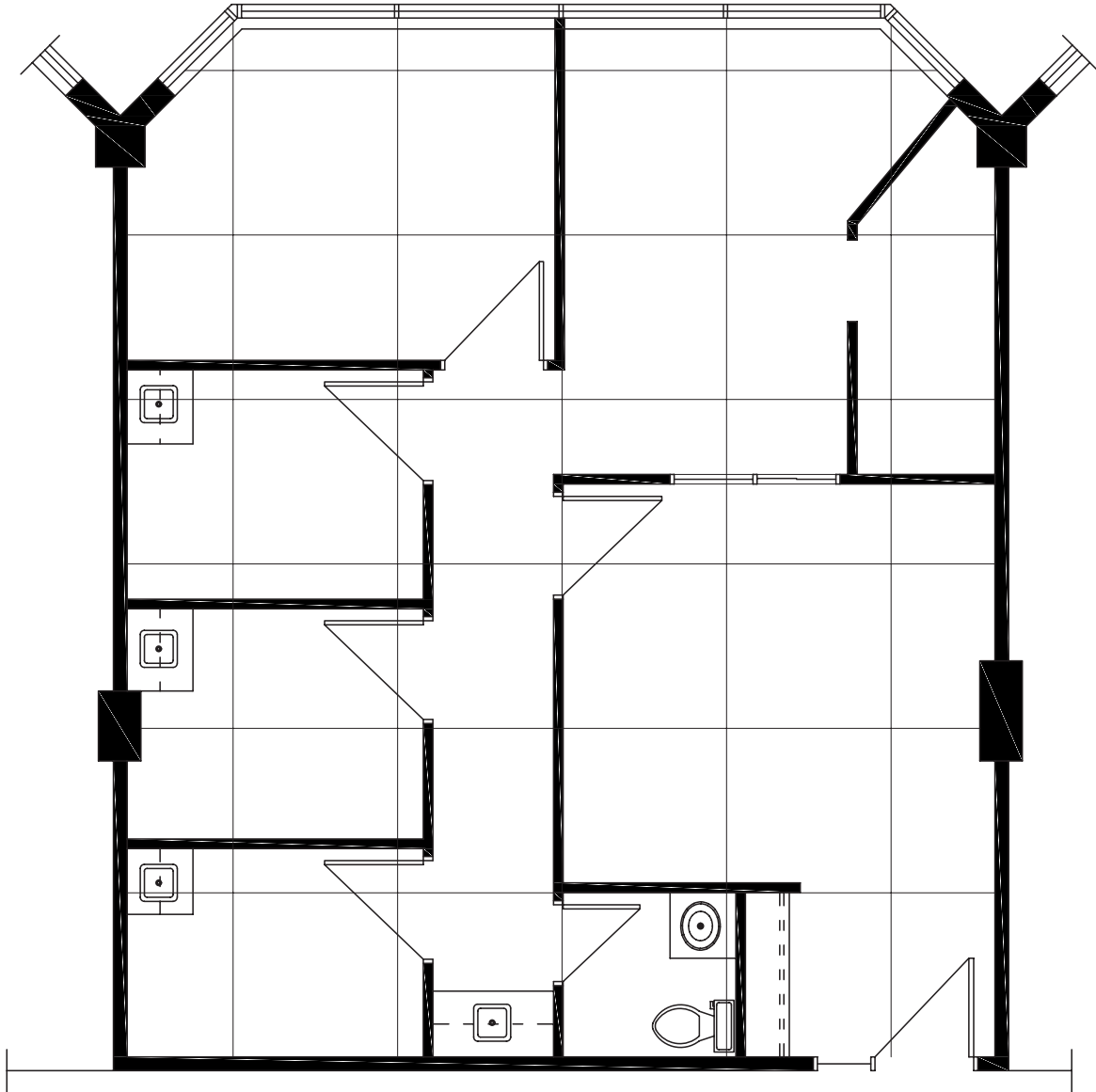
Available:

Immediately

Highlights:

- Reception area
- Three examination rooms and office
- Private washroom
- On-site medical laboratory, radiology services and pharmacy

1929 Russell Road SUITE 214 FLOOR PLAN



Suite 214 - 1,041 sq.ft.